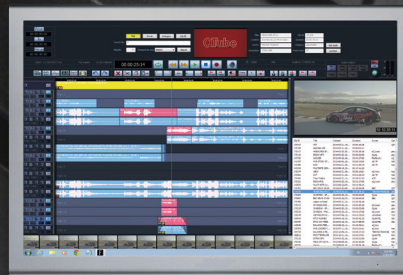


FAIRLIGHT | GATEWAY

Quantel® QTube® Integration Module

Features

- Better workflow – faster throughput
- Full integration of Fairlight audio post tools with Quantel® QTube®
- Instant video access – no rendering or importing required
- Easy retrieval of QTube® composition audio assets
- Fast layback of final audio to QTube® compositions



Today's workflow challenges

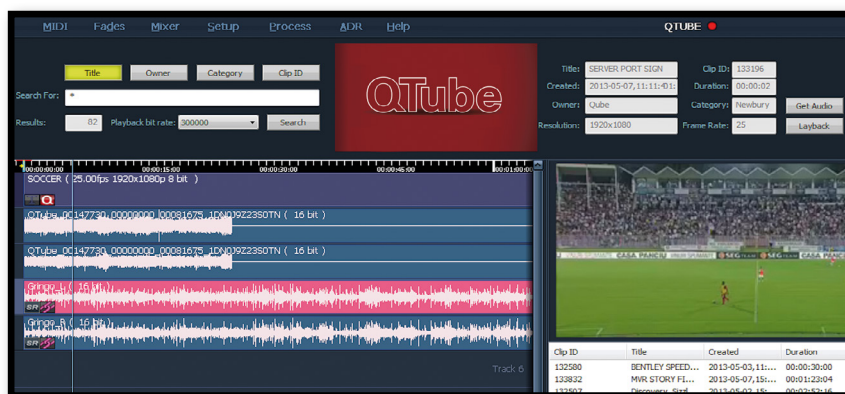
Tight integration with third party systems throughout a post or broadcast facility is vital to meeting the challenges of today's demanding audio production deadlines. Close collaboration with other technology companies and open design architecture enable Fairlight to deliver efficient and seamless workflow integration solutions for its broadcast and post clientele worldwide.

Fairlight Audio Post Systems

Fairlight makes the ultimate in audio post production tools. Professional tools for editing, mixing, plug-ins, file transfer and multichannel recording, all under the lightening fast control of Fairlight's tactile control surfaces featuring its patented Picture Key Technology. The powerful Crystal Core Media engine offers up to 192 recorder tracks, 230 mix channels and 76 buses, each with built-in EQ, dynamics, and optional VST plug-ins. Multiple mix bus destinations, up to 34 discrete outputs wide, makes complex delivery requirements easy. The extensive metering and monitoring, and a range of I/O units will cover the most demanding studio environments.

Fairlight GATEWAY - Tight, effortless integration with Quantel® QTube®

Fairlight's new Gateway software provides modules for seamless integration with popular third party storage solutions, media asset management systems and production collaboration platforms. The Quantel® QTube® module gives Fairlight audio editing systems instant, real-time access to Quantel® video compositions directly from the Fairlight software.



Leveraging the Quantel® server technology, Fairlight's Gateway accesses Quantel® compositions directly, with no rendering or video file import required. Frame accurate playback, jogging and scrubbing is instantly available over a local LAN network or even over the internet.

Extensive search functions allow the operator to quickly find pending work, and import audio assets from the Quantel® server with ease. At the end of the session, the final audio is laid back directly to the Quantel® server via Fairlight Gateway.

To experience how Fairlight seamlessly integrates with Quantel® QTube® and other collaboration platforms, contact your local Fairlight representative.

FAIRLIGHT

Fairlight Head Office
15 Rodborough Road
Frenchs Forest
NSW 2086 Australia

Telephone +61 2 9975 1777
Facsimile +61 2 9975 1999
info@fairlight.com.au
www.fairlight.com.au

Copyright © Fairlight.AU Pty Ltd. All Rights Reserved.

Whilst every care has been taken in the preparation of this publication, Fairlight.AU Pty. Ltd. does not warrant the accuracy or completeness of the information in this publication and Fairlight.AU Pty. Ltd. reserves the right to alter specifications without notice. To the extent permitted by law, Fairlight.AU Pty. Ltd. excludes all liability, including negligence, for any loss incurred in reliance of the contents of this publication. Fairlight is a trademark of Fairlight.AU Pty. Ltd. All other trademarks and registered trademarks included in this brochure are property of their respective owners.

www.fairlight.com.au